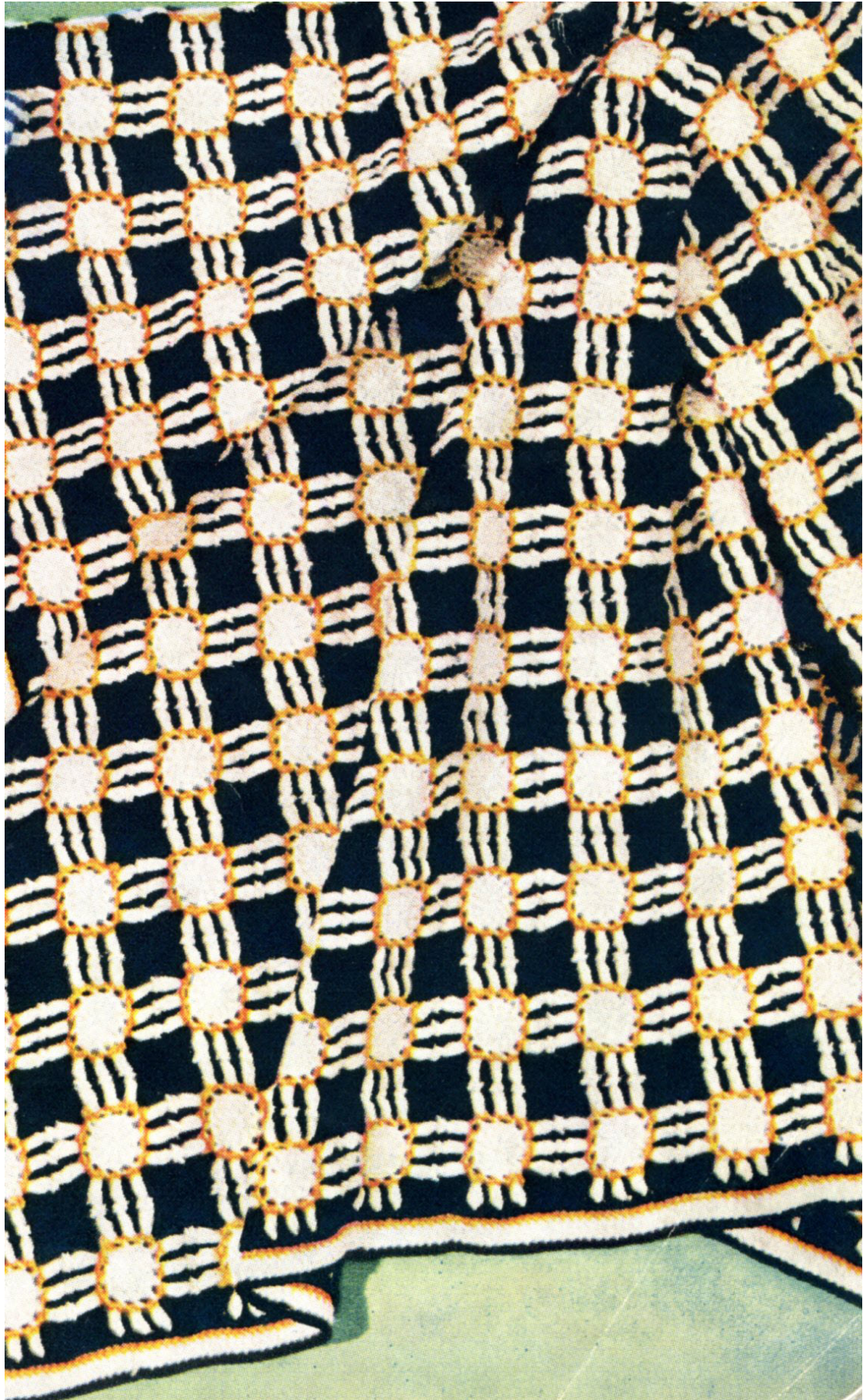


Honey comb Afghan



Honeycomb C-232

Illustrated in color on Page 3

Each motif measures 3 inches square.

Afghan measures 45 x 66 inches.

CHADWICK'S RED HEART KNITTING WORSTED, 4 Ply,
Art. E.232: 33 skeins (1 oz. "Tangle-Proof" Pull-Out Skeins) of No. 1 White, 24 skeins of No. 12 Black and 8 skeins of No. 243 Mid Orange.

Clark's O.N.T. Plastic Crochet Hook No. 5.

MOTIF (Make 330) . . . Starting at center with White, ch 4. **1st rnd:** 11 dc in 4th ch from hook. Join with sl st to top of ch-4. Drop White. **2nd rnd:** Draw a loop of Mid Orange through loop on hook, 2 sc in same place as sl st, working in back loop only make 2 sc in each dc around. Join and break off Mid Orange. **3rd rnd:** Attach Black in same place as sl st, ch 3, in same place make dc, ch 3 and dc; yarn over, insert hook in same place, draw a loop through, yarn over and draw through 2 loops on hook, drop Black, draw a strand of White through 2 loops on hook, thus changing color (always change color in this manner). * Working over unused color in order to conceal it, insert hook in next sc, draw up a loop to height of last dc, (yarn over, insert hook in same sc and draw up a loop) twice; yarn over and draw through all loops on hook (puff st made). Drop White, draw a loop of Black through loop on hook, (make a Black dc in next sc, a White puff st in next sc) twice; change color, in next sc make 2 dc, ch 3 and 2 dc. Repeat from * around. Join and break off both colors.

Sew 15 rows of 22 motifs neatly together with corresponding colors.

BORDER . . . 1st rnd: Attach Black to any corner sp, 5 sc in same sp, sc in back loop of each st around, making 5 sc in each corner. Join and break off. **2nd**



rnd: Attach Mid Orange to same place as sl st, sc in back loop of each sc around, making 3 sc in each corner sc. Join and break off. **3rd rnd:** Attach White to same place, ch 3, dc in back loop of each sc, making 5 dc in each corner sc. Join and break off. **4th rnd:** Attach Black and sc in back loop of each dc around, making 3 sc in each corner dc. Join and break off. Block to measurements.